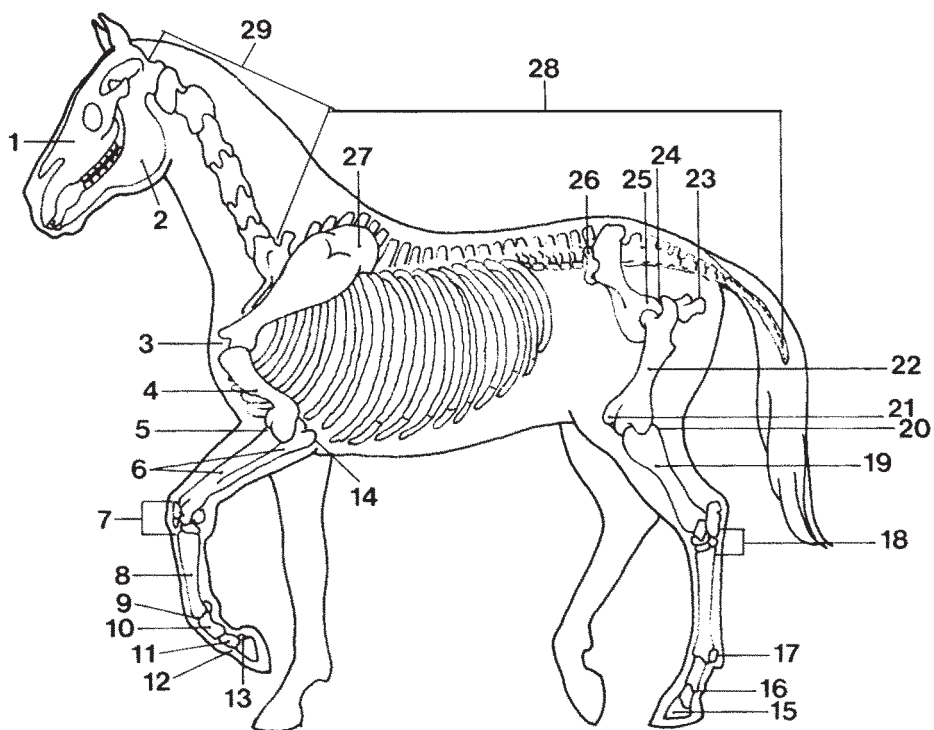


SKELETON OF THE HORSE



- | | | |
|------------------------------|----------------------------|------------------------------|
| 1. Skull | 10. First phalanx | 20. Stifle joint |
| 2. Mandible (jaw) | 11. Second phalanx | 21. Patella (knee cap) |
| 3. Shoulder joint | 12. Coffin joint | 22. Femur (thigh) |
| 4. Humerus (arm) | 13. Navicular bone | 23. Point of buttock |
| 5. Elbow joint | 14. Point of elbow | 24. Hip joint |
| 6. Radius and ulna (forearm) | 15. Coffin bone | 25. Pelvis |
| 7. Carpal joint (knee) | 16. Pastern joint | 26. Point of hip |
| 8. Cannon bone | 17. Proximal sesamoid bone | 27. Scapula (shoulder blade) |
| 9. Fetlock joint | 18. Tarsal joint (hock) | 28. Spine |
| | 19. Tibia and fibula | 29. Vertebrae of neck |